

# MPK20.2

2IN1 MINIPICKER:  
PICK&CARRY CRANE & GLASS ROBOT



Lifting capacity

**2000 kg**



Max tip height

**7,4 m**



Dimensions (l x w x h)

**2690 x 1190 x 1530 mm**



Powered by

**Li-ion battery**



Weight

**1845 kg**

1440 kg machine  
405 kg removable ballast



EN [m - kg]



# WORKING MODES

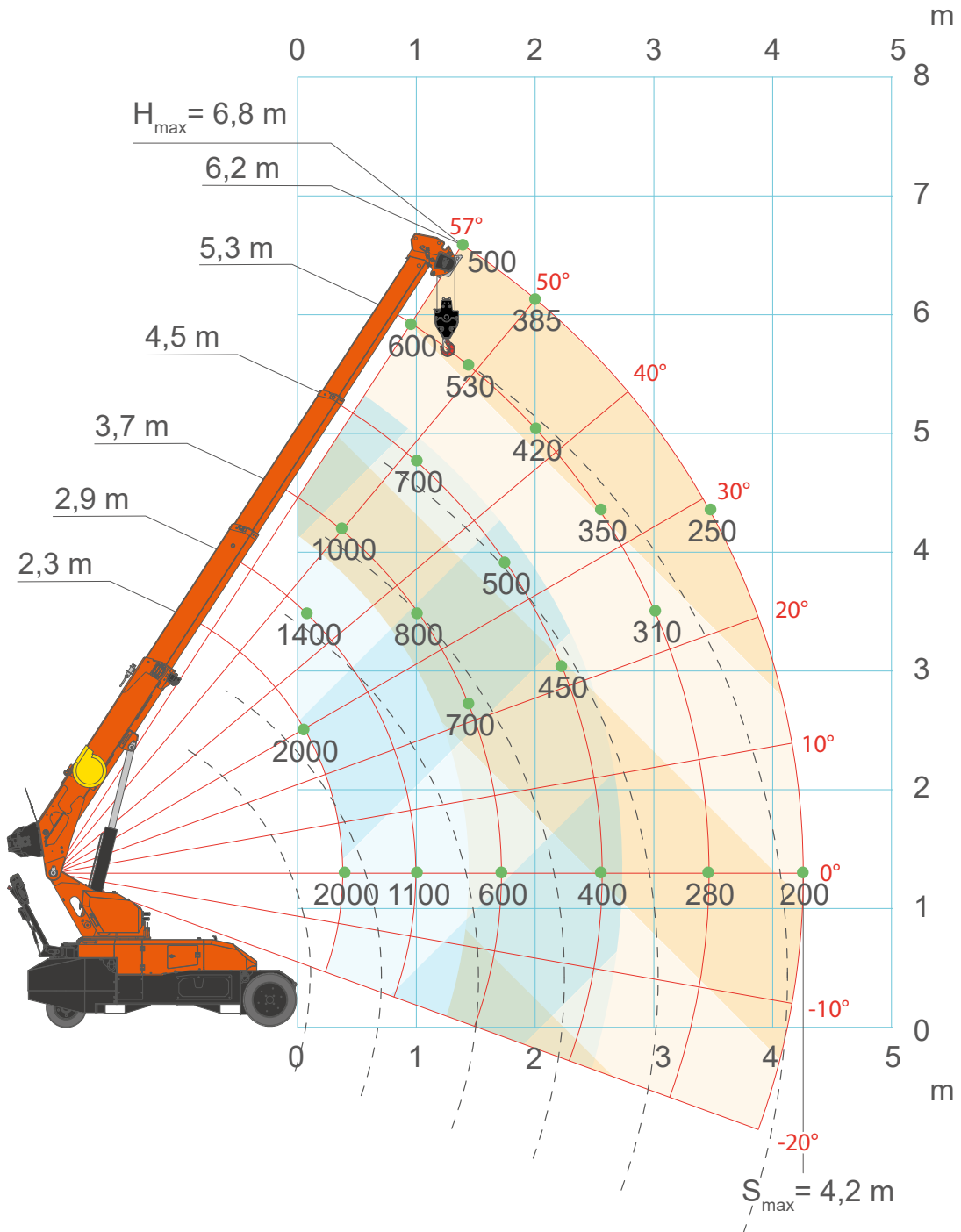
# WINCH

**2000 kg**

- Two options: 700kg-62 m / 600kg-135 m
- Up to 2000 kg / 1800 kg capacity 3 falls



Winch Load Chart



# SEARCHER HOOK

**1000 kg**

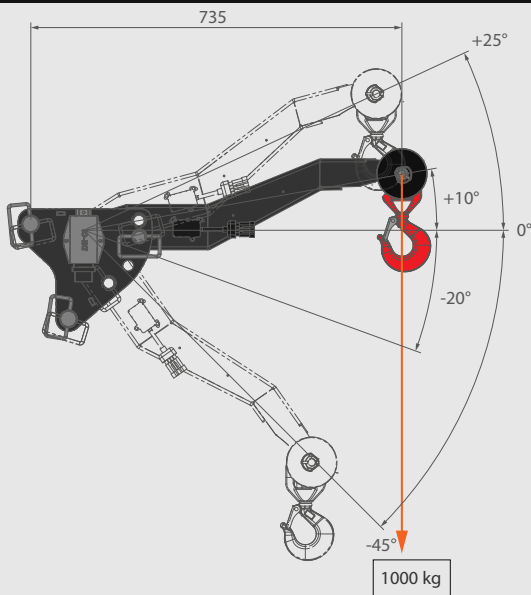
# JVM800R MANIPULATOR **800 kg**

- 4 angles: +25° / +10° / -20° / -45°
- Increases working geometry and versatility
- Easily stowed on the crane when not in use

- Stand-alone vacuum manipulator for glass and panels
- Independent vacuum system, battery, radio remote control
- Universal for any crane
- Up to 8 pads, modular layout
- Two independent vacuum circuits
- 360° rotation, tilt and swing
- Pads for glass, marble, slabs and sandwich panels
- "Blow-off" function for easy release



\*More info on JVM800R brochure



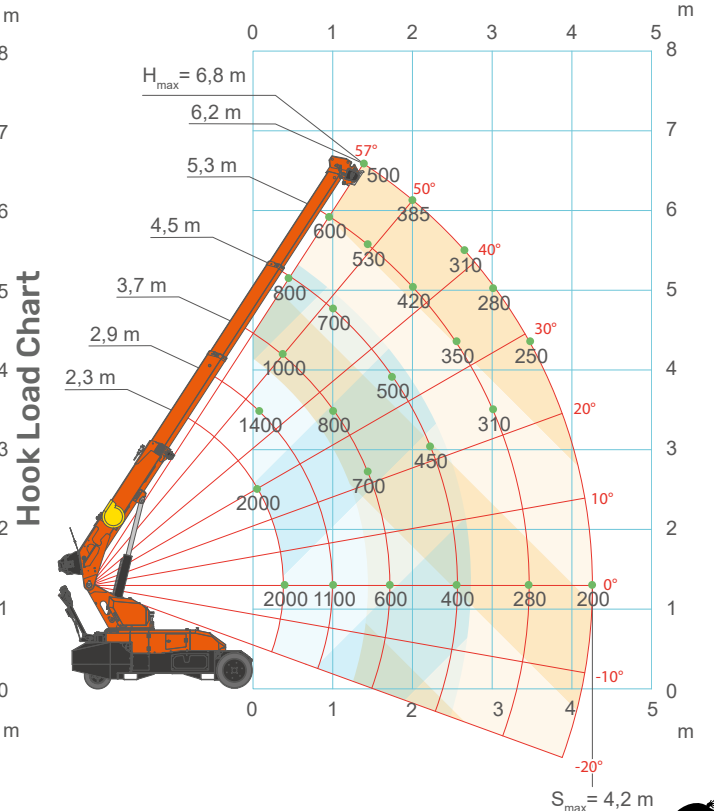
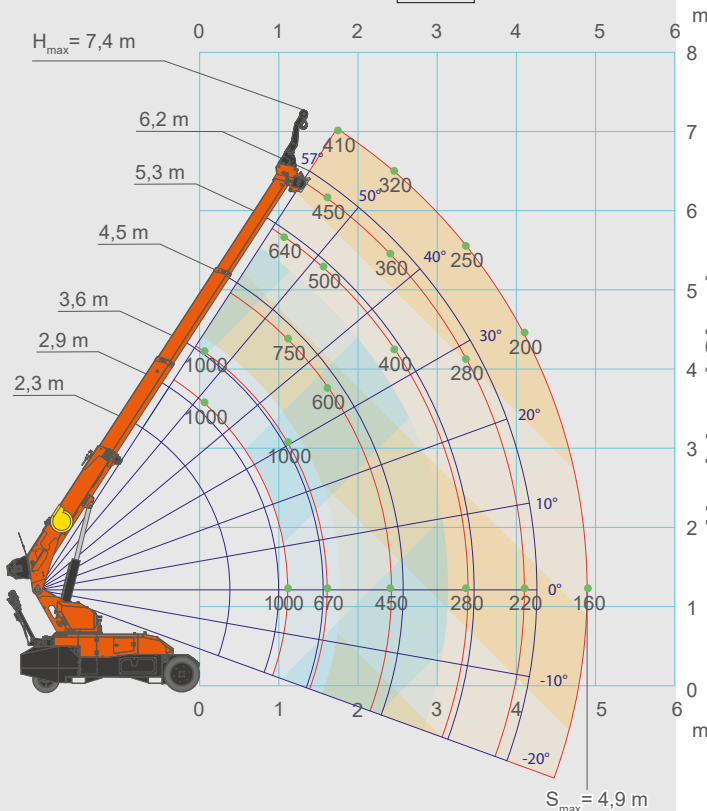
# HOOK

**2000 kg**

- Unique drop-down design
- Fast hook-winch switch



Searcher Hook Load Chart





## INTUITIVE CONTROL

### Onboard display:

- 5" IP66 touch display for management & diagnostics

### Radio remote control\*: Simple, intuitive, proportional

- Spare battery on board
- Self-diagnostics & emergency button

**Tiller bar:** all driving and crane functions available

## EASY TO DRIVE EVERYWHERE

- Steer by wire \*
- Front-wheel drive with two independent motors
- Twin front and rear wheels

### BOOM MOBILITY

- Turret side rotation  $\pm 6^\circ$
- Double hydraulic + 1 manual boom extensions



### LI-ION BATTERY POWERED

- Indoor operation, emission free
- Maintenance free
- Runtime over 1 workday
- On board 110/230V fast charger: 0-80% in 3 h
- Adjustable charging current
- Work while charging



### MODULAR BALLAST

- Easily removable ballast modules
- Operates without ballast
- Automatic lifting capacity adjustment
- 405 kg total weight



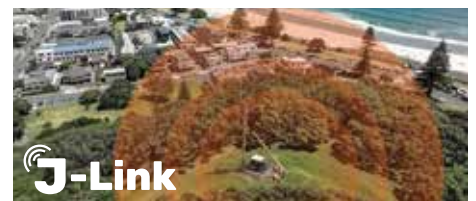
### INDOOR WHEELS

- Non-marking white tyres for indoor



### J-LINK POWERED BY TRACKUNIT\*

- Remote fleet monitoring and diagnostics
- Built-in or retrofit on existing units



\*Optional



**MPK20.2**  
2IN1 MINIPICKER

Jekko s.r.l. • [info@jekko.it](mailto:info@jekko.it) • [www.jekko-cranes.com](http://www.jekko-cranes.com)

Specifications are subject to change without notice.

All data provided is for reference purposes only and is not legally binding.