



Technical Data

Specification & Capacities

TRX32

DRAFT

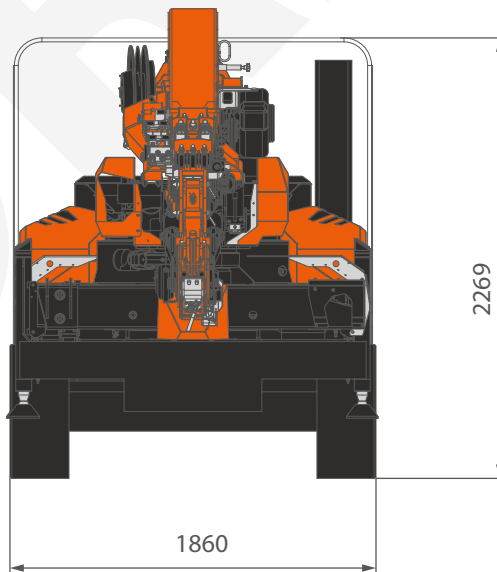
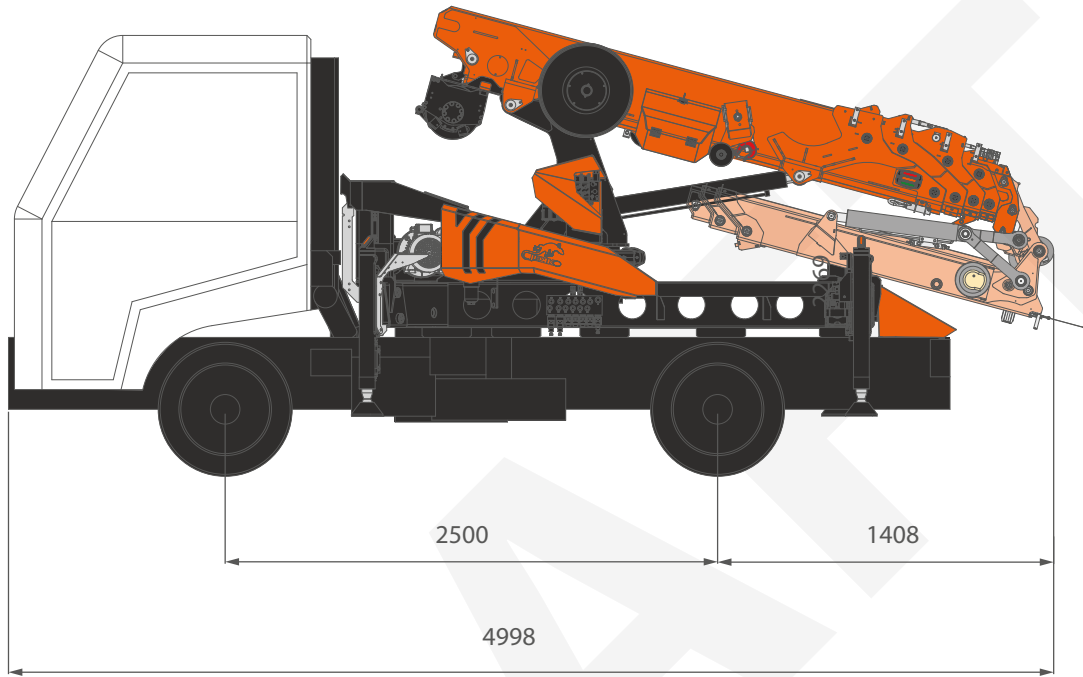


EN 13000:2014

14.03.2025 | Dft0.0

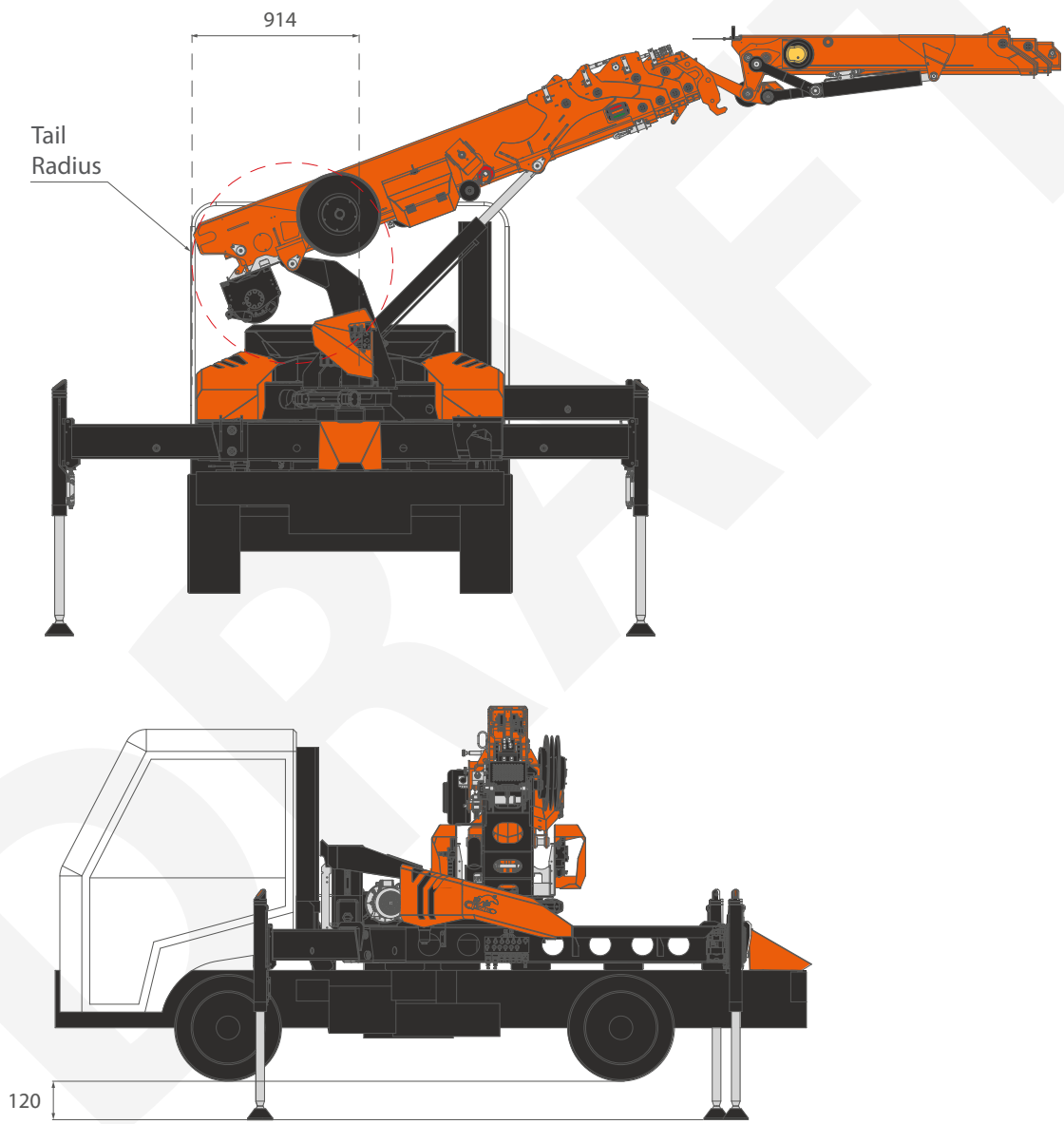
[m] [kg]

OVERALL DIMENSIONS

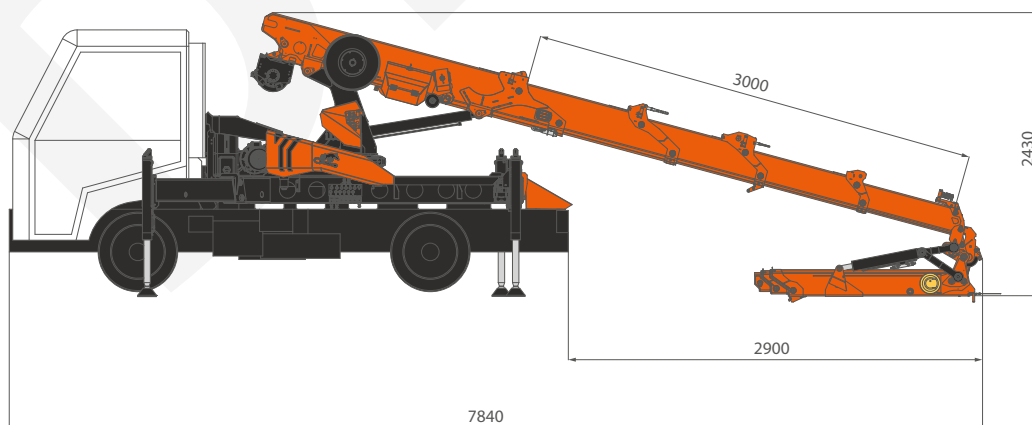
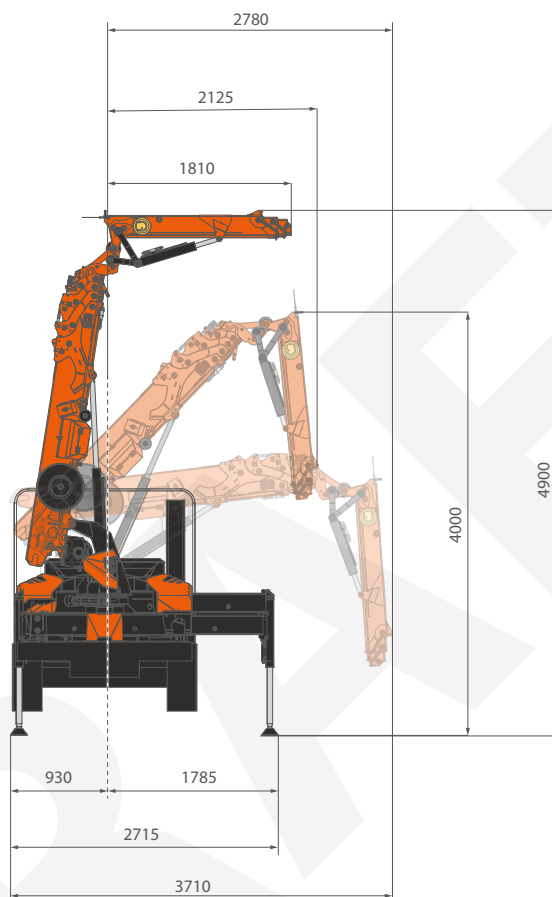






TAIL SWING




JIB DIMENSIONS



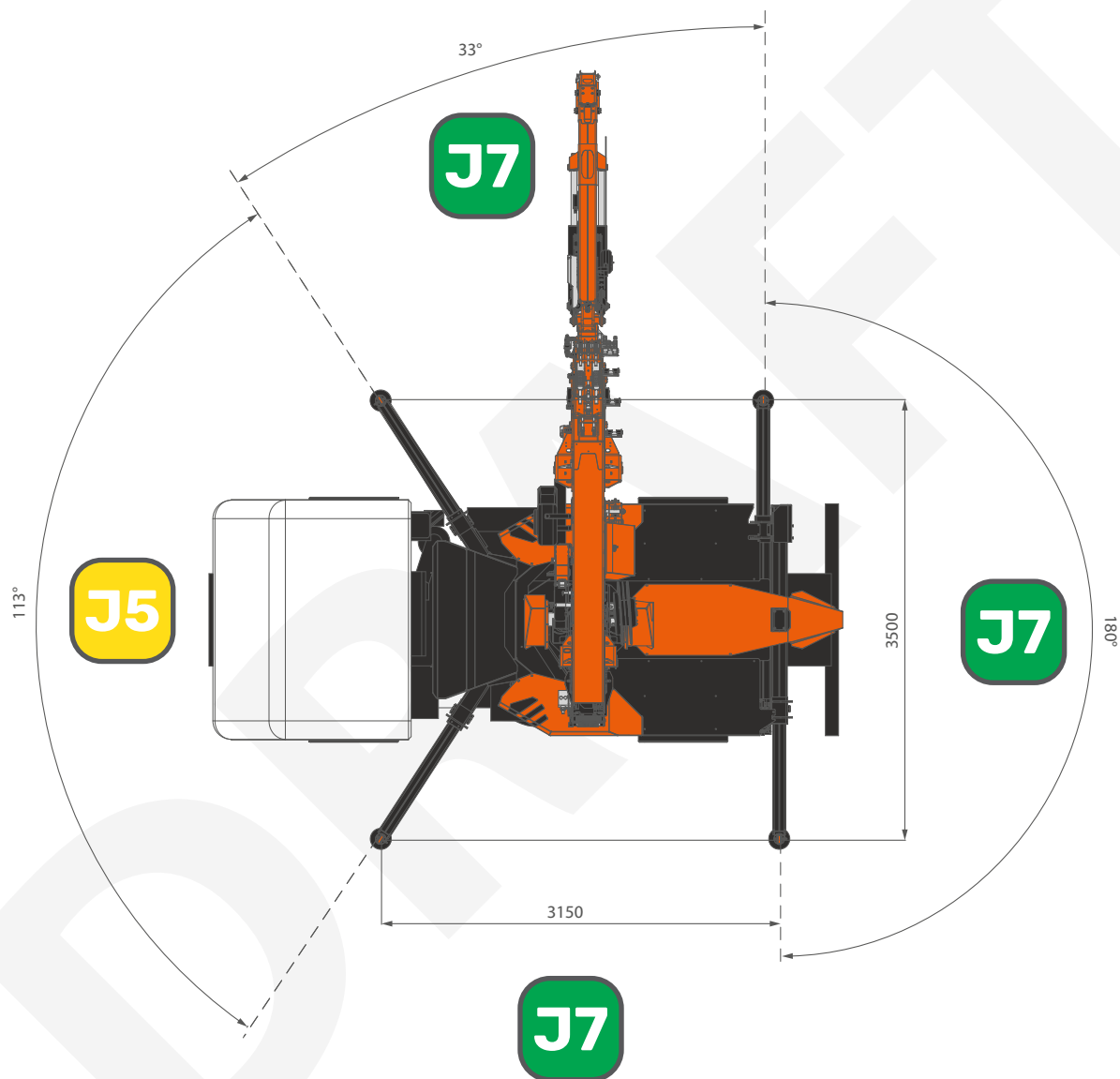
OVERALL INFORMATION

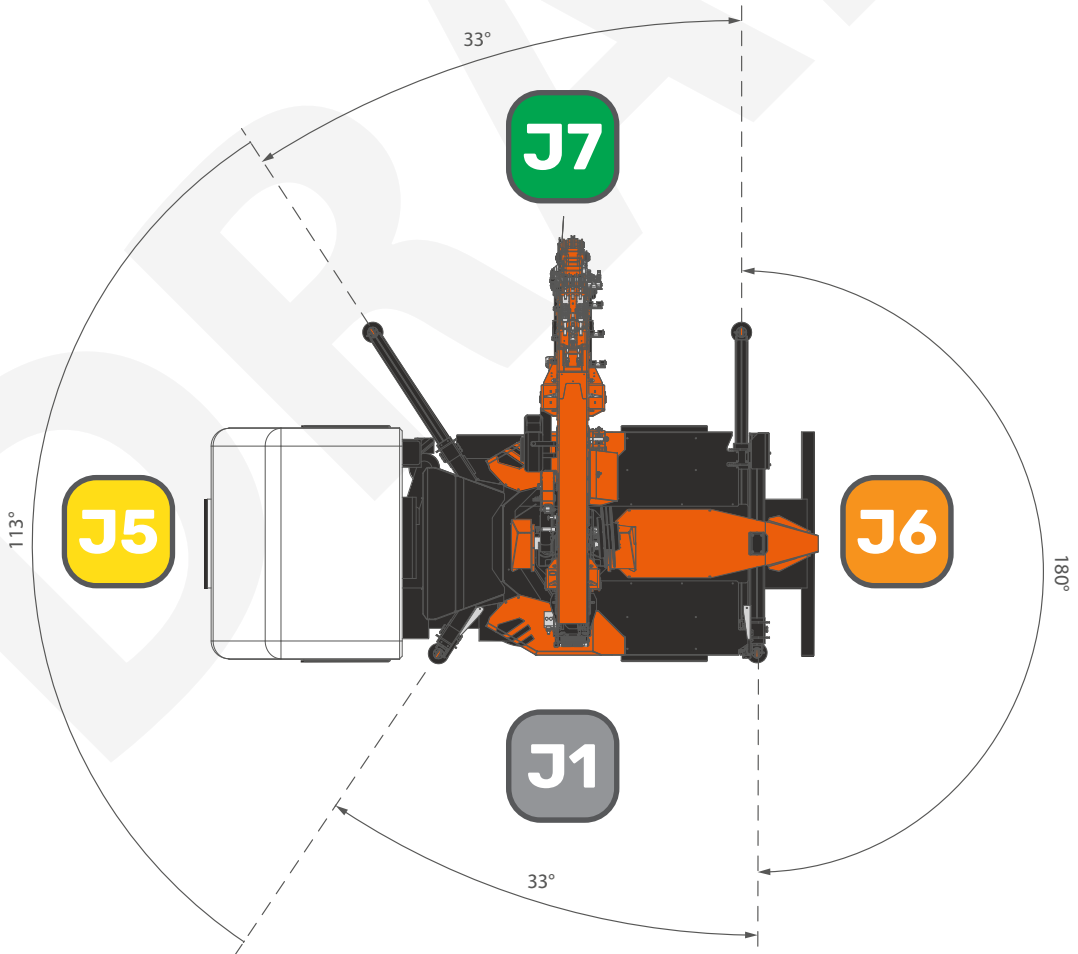
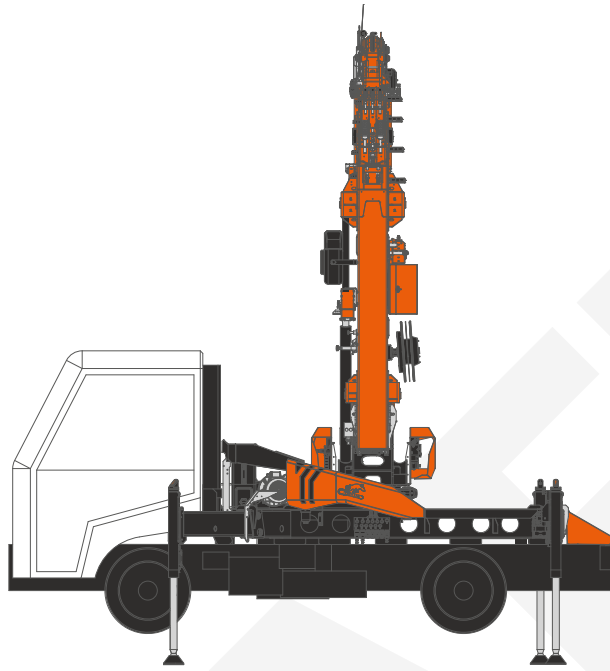
	NAME	DESCRIPTION	U.M	VALUE
INFO	 BOOM	Length	m	2,6-10,3
	 MAX CAPACITY		kg	3.200

WEIGHT	 CRANE	TRX32	kg	3.500
--------	---	-------	----	-------

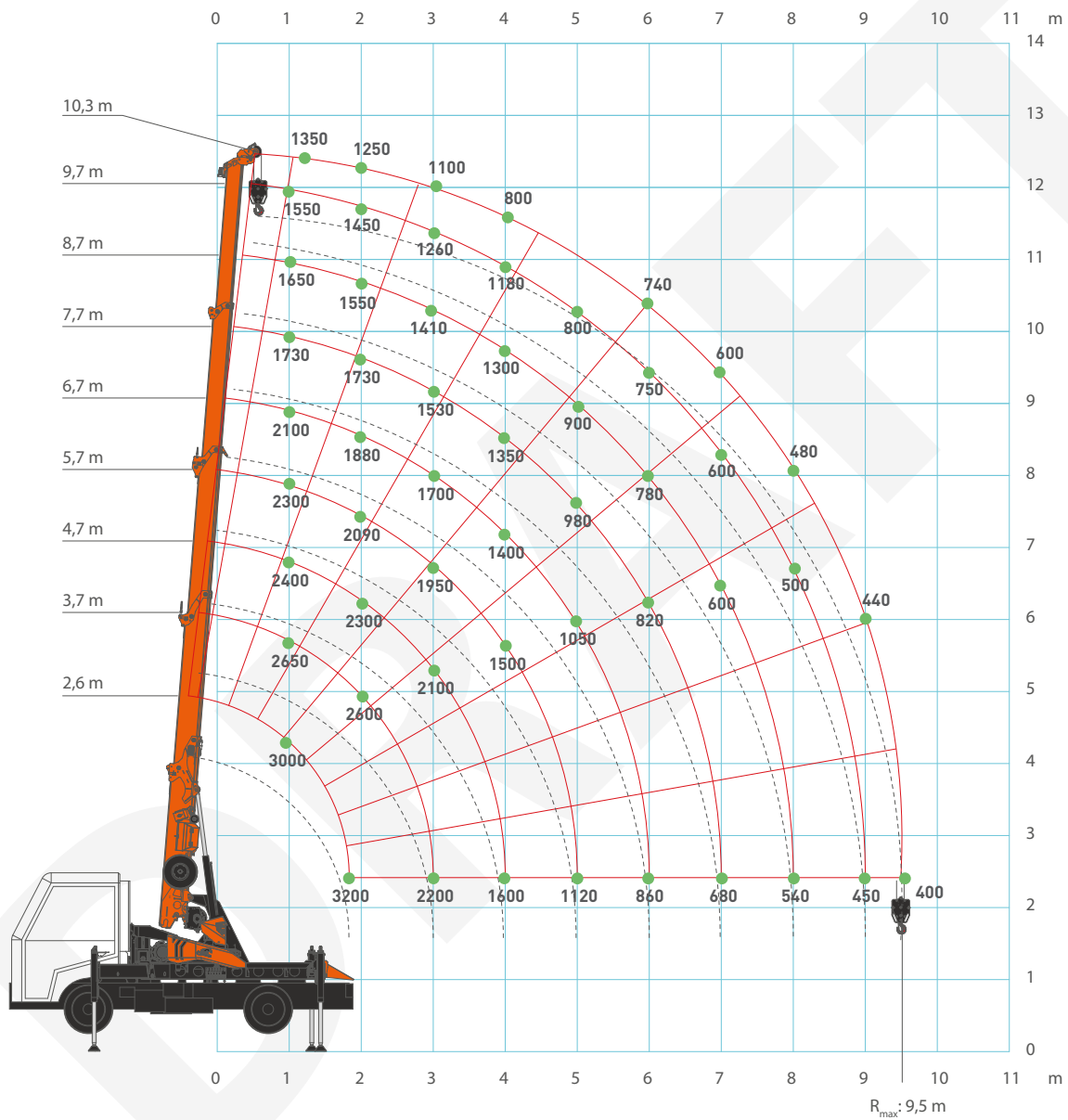
HOOKBLOCK	Block type	Load	N° of	
			Sheaves	Lines
		kg		
4T-D8	3.200	2	4	
	2.400	1	3	
	1.600	1	2	
1 ton Single Line Hook	800	-	1	

STABILITY AREAS





MAIN BOOM

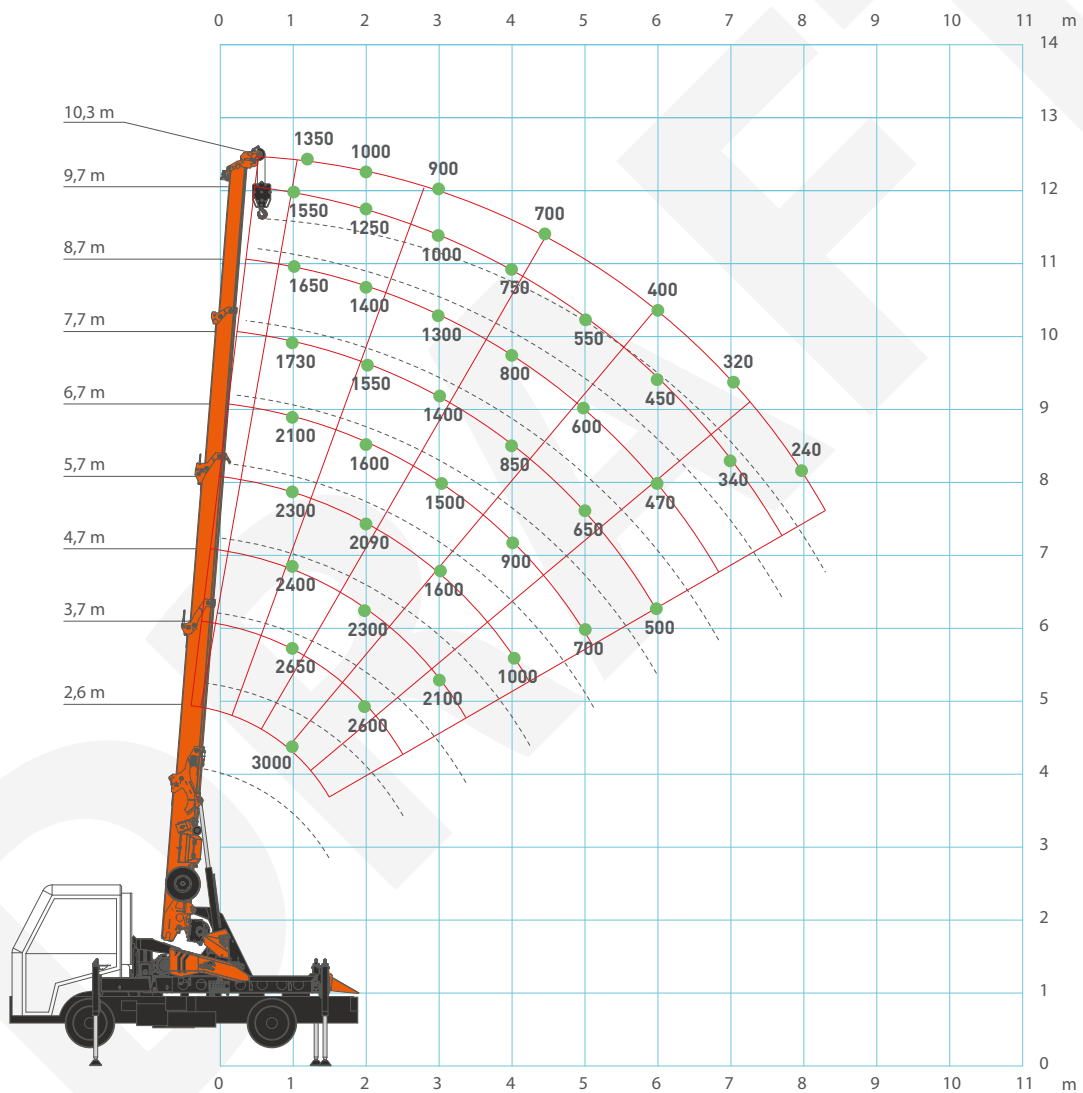


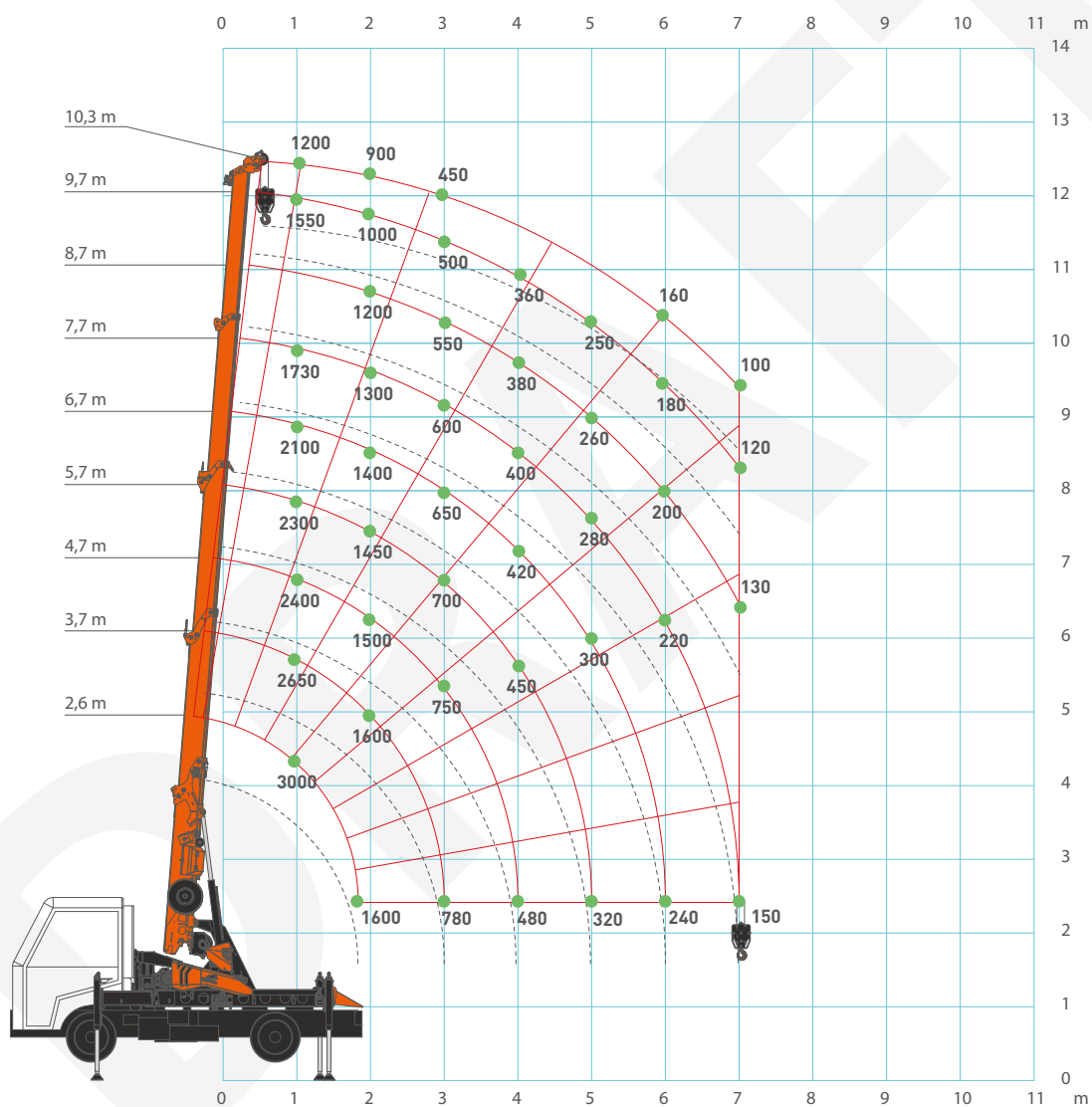
[kg]

TRX32



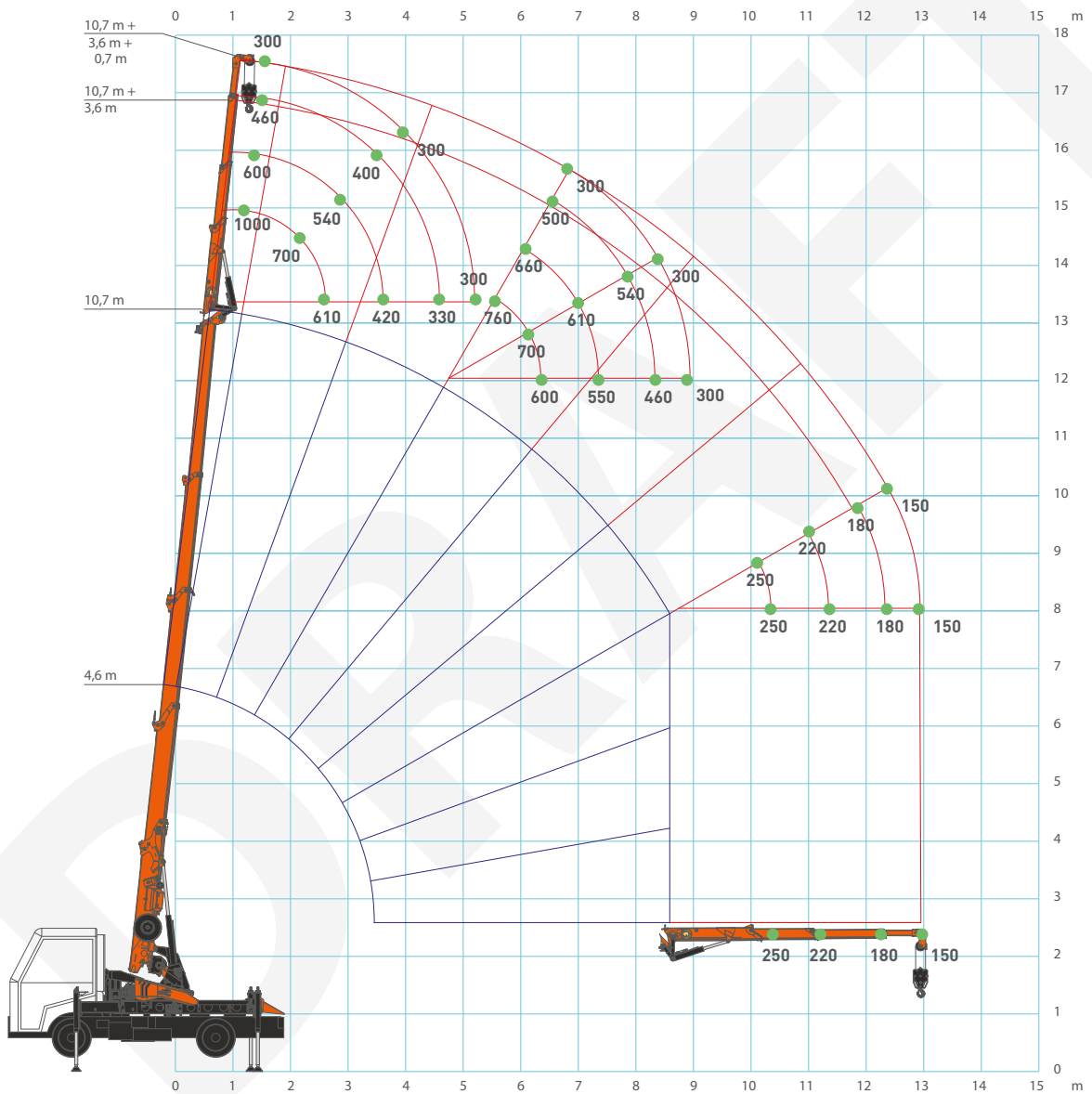
J5

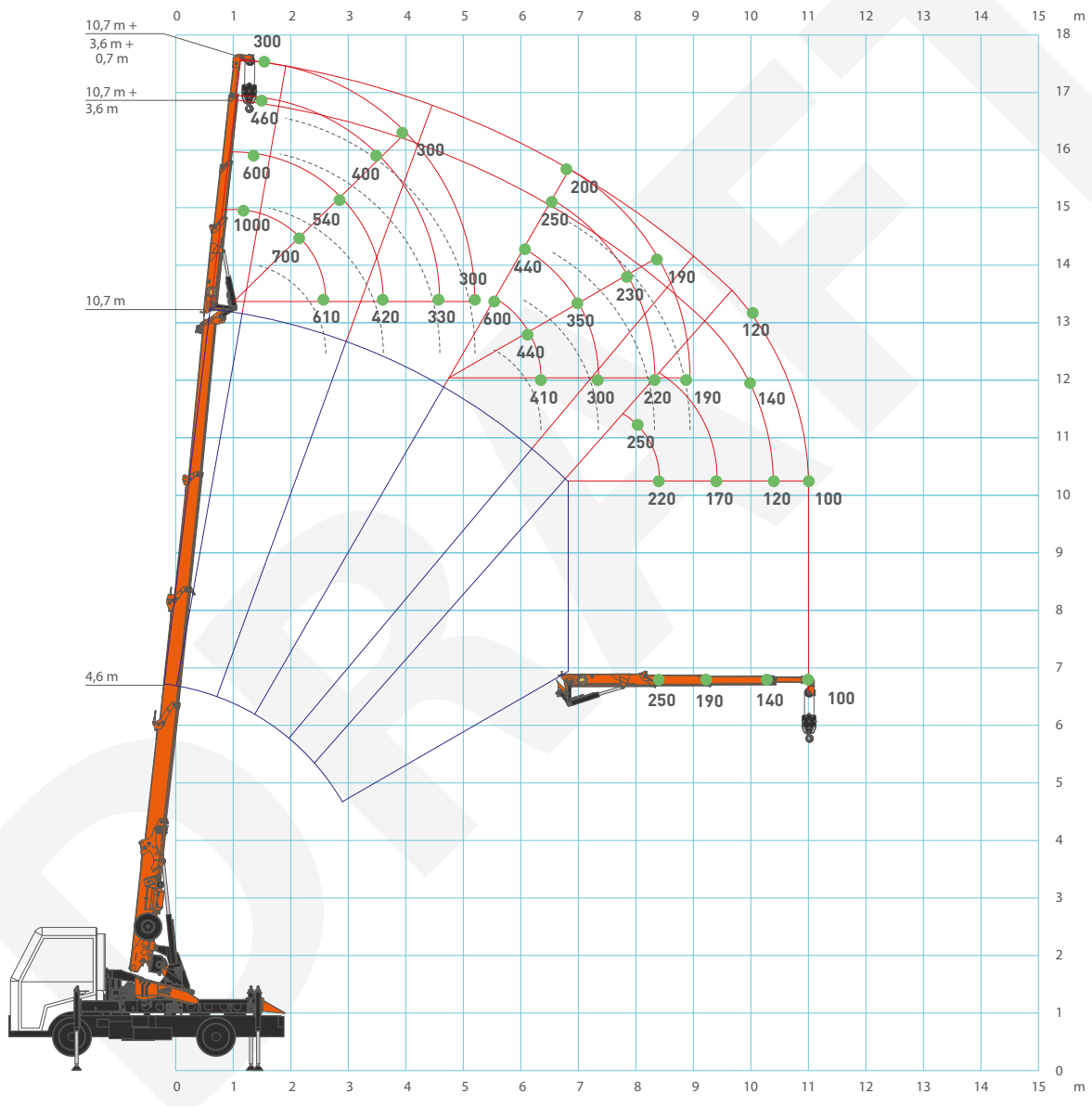




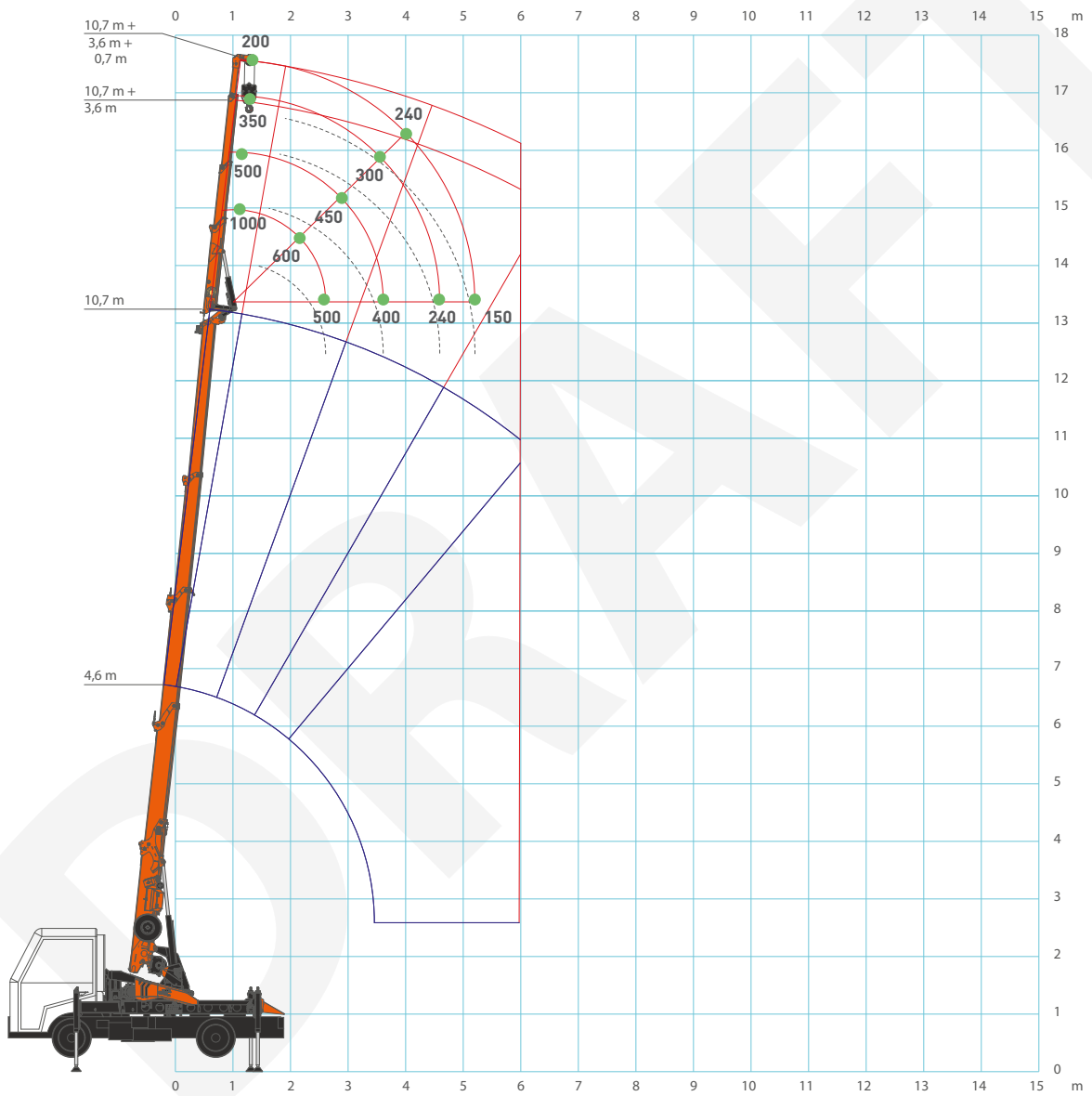
[kg]

JIB1000.2H1MX



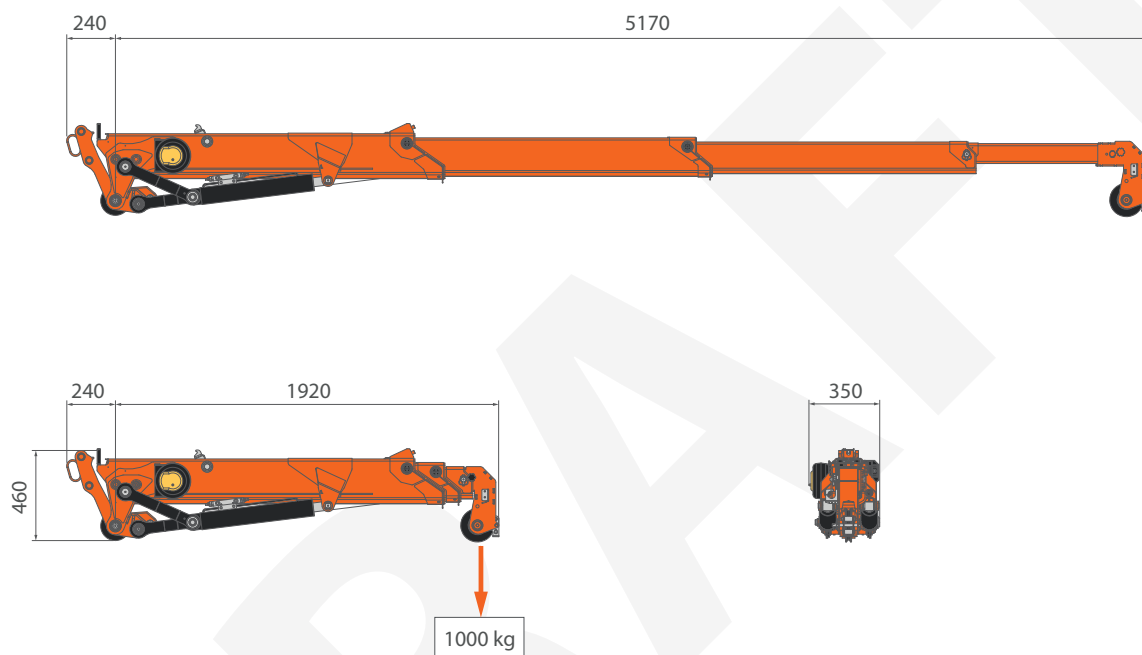


TRX32



ACCESSORIES FEATURES

JIB1000.2H1MX



[mm] *: While working in winch configuration, it shall be used only the single fall hookblock. JIB1000.2H1MX max capacity is limited at 800 kg by LMI.

SYMBOLS



Boom Length



Max Capacity



Weight



Jib



360° Turret Slewing

LOAD CHARTS REMARKS

- Load tables have been calculated following the EN 13000:2014 standard.
- Load tables have been calculated considering a wind load of 13,8 m/s, a sail area of 1m²/t and a drag coefficient of 1,2.
- Load capacities are given in kg.
- Hookblocks and hooks weight is part of the load, hence it shall be deducted from the capacity values.
- The working radius is measured form the turret slewing center.
- The supplied Technical Data is part of the Use & Maintenance Manual.
- Features and specifications may change without prior advice.
- All indicated data are for informational purposes only and are not binding as the crane performs differently depending on its use.

DRAFT



Jekko s.r.l.

Via Campardone, 1 - 31014 Colle Umberto (TV) - Italy
info@jekko.it - www.jekko-cranes.com

SERIAL NUMBER:

14.03.2025 | Dft0.0